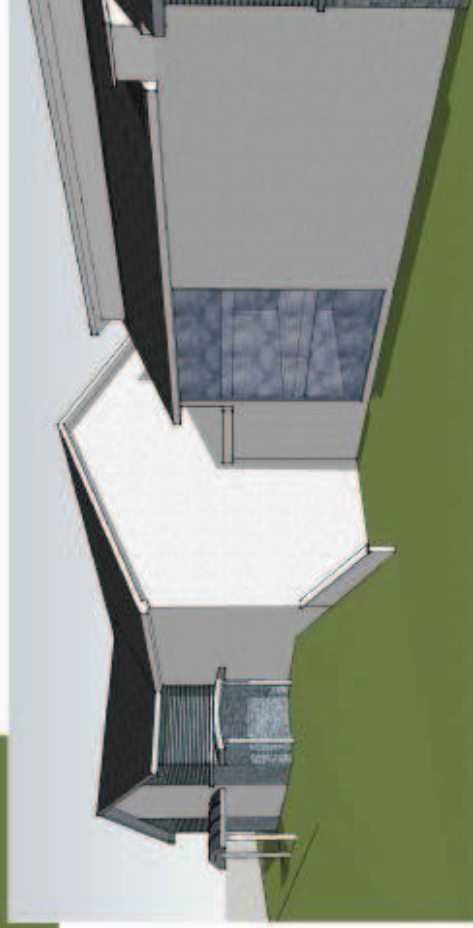
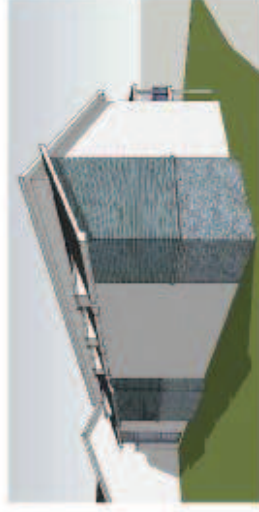
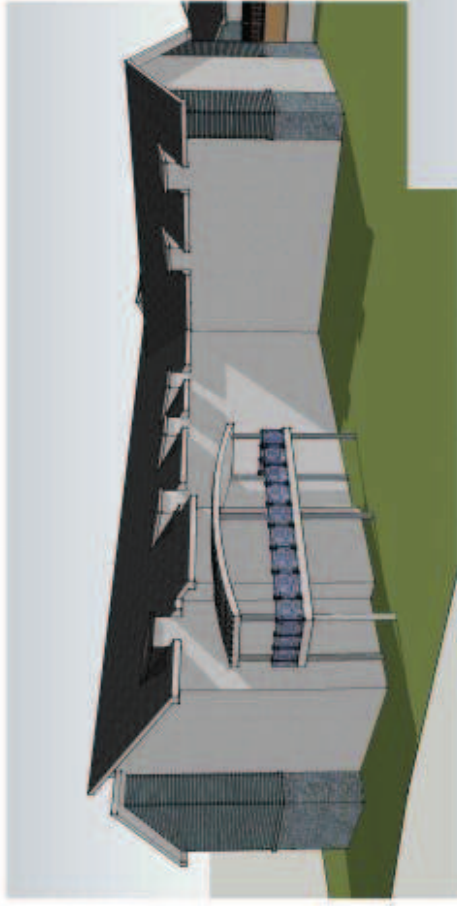


## Materials & Inspirations

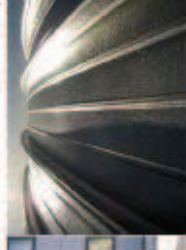
- Contemporary Design - Built for Today
- Modern Material Style & Application
- Retained Residential Feel, Scale & Form
- Local Architectural Influences
- Sustainable Design for the Future
- A Building for the People of Brixham



Slate Roof Finish



Barreled Standing Seamed Entrance Canopies



Blue / Grey Stone Cladding



Crisp Smooth White Rendering



Blue / Grey Timber Cladding



Durl Rock Heights, Shankham Village, Brixham



St Marys Hill & Cricket Club, Brixham